



Engineered to Move. Designed for Clarity. Always in Focus.

Uncover what you need to keep your business moving

The Luminy PTZ line combines advanced imaging and intelligent detection to deliver unmatched performance in any environment. Featuring STARVIS sensors, these cameras excel in low-light conditions by capturing clear, full-color images even in near darkness—providing greater detail and accuracy than traditional infrared solutions. With powerful 4MP and 8MP resolutions, mid-to-long range optical zoom, and a full suite of analytics, Luminy PTZs ensure reliable, around-the-clock proactive security.



LumiFocus



LumiTracking



LumiDeterrent



LumiSearch

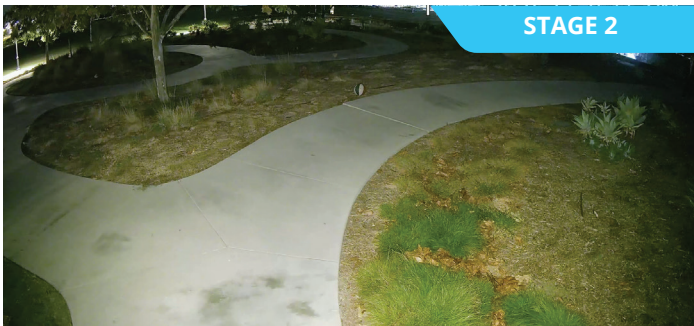
Powerful Prevention



PTZs with the LumiDeterrent technology integrate full-color low-light imaging with advanced proactive deterrence features, including customizable audio alerts, warning lights, and dual-illumination. It supports three operational modes—infrared, dusk-to-dawn white-light LEDs for continuous deterrent monitoring, and motion-activated lighting. Brightness levels are remotely adjustable to minimize light pollution and optimize visibility for different environments. Available on P5-D and P4-D Series PTZ cameras.



When the camera can no longer render clear color video due to low ambient lighting, the infrared illuminators turn on to produce high-quality black-and-white images in scenes with no motion.



When motion is detected, the white-light LEDs automatically turn on to add ambient lighting and deterrence. Additionally, flashing lights and an audio alarm are deployed.

When motion is no longer detected, the camera automatically turns off the white-light LEDs and reactivates IR illumination, reducing light pollution.



Audio Alarm



Flashing Lights



Flexible Dual-Illumination for Any Scene

Optimized to Find Things Fast



Find and track a target using reference image throughout video footage.

LumiSearch

LumiSearch technology enables fast target detection and tracking in security video using a single reference image. The algorithm analyzes body shape to locate a person across any LumiSearch-enabled camera or NVR. It does not use facial recognition, require pre-registration, or collect personal data; instead, individuals are assigned random numbers used only for matching.



LumiSearch PTZs

FEATURE	LumiSearch
Efficient Tracking Locate individuals or vehicles quickly across feeds with a single reference image	Y
Pre-Search by Intrusion Draw custom search areas with irregular shapes for precise monitoring	Y
Search Based on Uploaded Image	Y
Search Across Multiple Cameras Search compatible cameras connected to same NVR	Y
Compatible Cameras	P5-S Series, P54-4DB25
Compatible NVRs	R5 & R6 Series NVR

Powered by Intelligence



Luminys offers video analytics as a built-in standard across the network camera lineup.

LumiAnalytics utilizes detailed metadata and advanced AI algorithms to track key metrics, including people counting. These insights provide businesses with highly valuable information to improve and optimize operations.

Harness the Power of Video Analytics

- Real-time Alerts for Safety Violations
- Reduce Potential Threats
- Increase Operational Efficiency
- Included at the edge on all network cameras

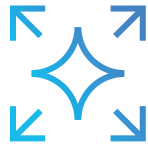
Video Content Analytics+ is available on all Luminys PTZs. VCA+ is the umbrella for Line Crossing, Intrusion, Loitering Detection, and Parking Detection analytics.

- Line Crossing identifies when a person or object crosses a defined line.
- Intrusion detects when a person or object breaches the boundaries of a defined area or enters a restricted area.
- Loitering Detection sends alerts to mobile devices when it detects a person or vehicle lingering in an area for a pre-set duration.
- Parking Detection establishes a virtual perimeter around designated parking zones and triggers alerts when vehicles exceed the allowed parking time.



	P4-R SERIES	P4-D SERIES	P5-D SERIES		P5-S SERIES		
	P45-8RA25	P44-8DB25	P54-4DA25	P54-4DB25	P54-4SA25	P55-4SA45	P5C-4SA32
Resolution	8MP 25x	8MP 25x	4MP 25x IP PTZ and 4MP Dual-Stitched Fixed Lens	4MP 25x	4MP 25x	4MP 45x	4MP 32x
IR Distance	Up to 492ft	Up to 330ft	PTZ: Up to 328ft Dual: Up to 98ft	Up to 330ft	Up to 328ft	Up to 492ft	-
White-Light LEDs	-	Up to 330ft	PTZ: Up to 131ft Dual: Up to 98ft	Up to 330ft	-	-	-
Red and Blue Lights	-	Yes	Yes	Yes	-	-	-
LumiSearch	-	-	-	LumiSearch	LumiSearch	LumiSearch	LumiSearch
LumiFocus	Yes	Yes	Yes	Yes	Yes	Yes	Yes
Video Content Analytics	VCA+	VCA+	VCA+	VCA+	VCA+	VCA+	VCA+
iMD	Yes	Yes	Yes	Yes	Yes	Yes	Yes
LumiAnalytics	People Counting, Face Detection	-	-	-	Face Detection	People Counting, Face Detection	People Counting, Face Detection
Advanced Features*	Yes	Yes	Yes	Yes	Yes	Yes	Yes
LumiTracking	Yes	Yes	Yes	Yes	Yes	Yes	Yes

*Advanced features support the following: Fence Climbing, Abandoned/Missing Object, People Gathering, Vehicle/Human Alarm Classification, Linkage Tracking

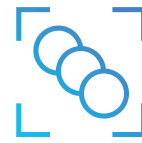


LumiFocus

Precision Where It Matters

Thanks to LumiFocus technology, all Luminy PTZs feature the unique ability to keep targets in focus so operators never lose sight when zooming in or out of a scene. As a result, this feature is ideal for PTZs that are on a tour, ensuring important information is always in focus.

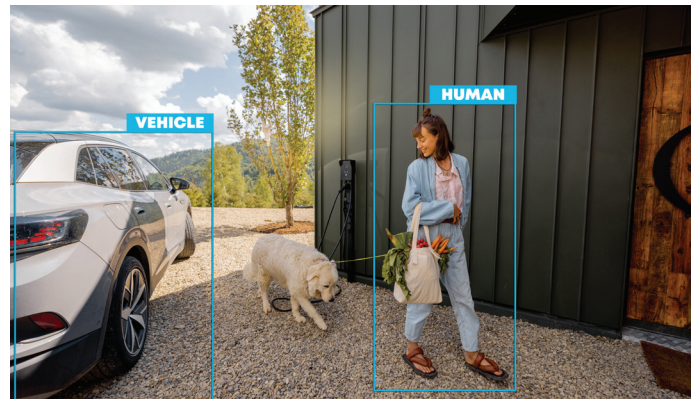
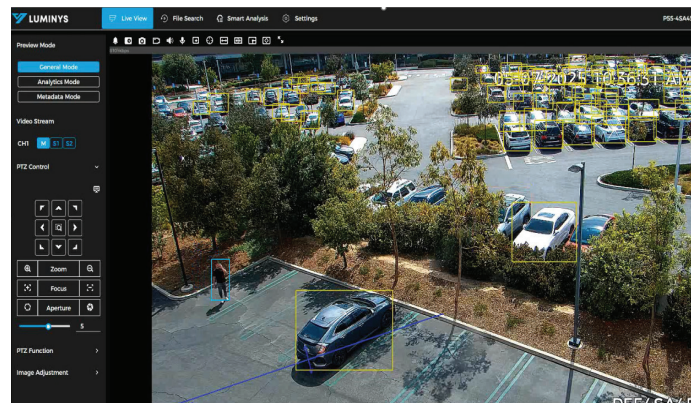
LumiFocus technology — delivers seamless, razor-sharp focus at every zoom level. No delays, no distractions, no refocusing of the lens — just crystal-clear footage from start to finish. Available on all Luminy PTZs.



LumiTracking

Follow the Things that Matter

LumiTracking technology enhances security and efficiency by automating the tracking of people and vehicles. It uses advanced AI algorithms to monitor and predict the direction and speed of moving targets, enabling quick response to potential issues for enhanced security and smooth operation. Available on all Luminy PTZs.



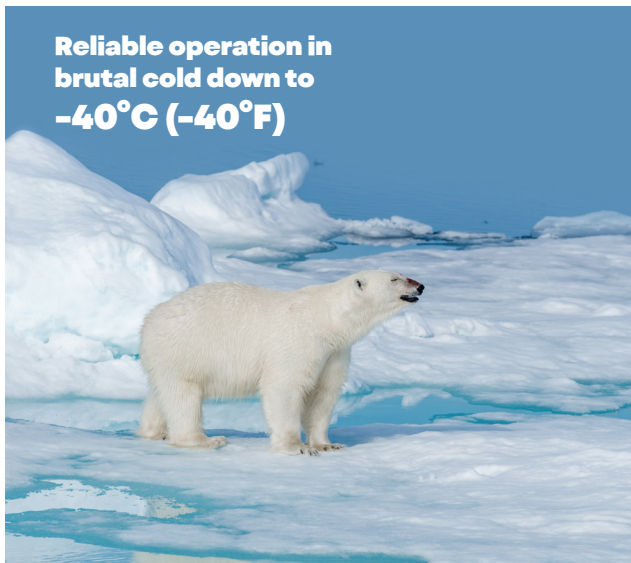
Survive the Elements

From freezing winters to scorching summers, Luminys PTZs feature LumiPolarPro and/or LumiDesertPro for consistent operation in harsh weather.

A wide operating temperature ensures security cameras deliver reliable, continuous performance in extreme environments. This durability makes them ideal for outdoor installations, remote sites, and critical infrastructure where climate conditions are unpredictable.

LumiPolarPro and **LumiDesertPro** are available on the following network PTZ camera series: P4-R, P5-S*, P5-D, P4-D.

*: P5C-4SA32 not included



LumiPolarPro

Arctic Dependable.

LumiPolarPro technology ensures rugged all-weather performance. Depending on the product model, LumiPolarPro enables dependable performance in -40 °C (-40 °F) or lower.



LumiDesertPro

Built to Last.

LumiDesertPro technology ensures rugged all-weather performance. Depending on the product model, LumiDesertPro allows operation in temperatures 60 °C (140 °F) or higher.

