



Pantos Trucking Bolsters Logistics Security and Operational Uptime with LUMINYS Intelligent Infrastructure

Columbia Security Systems & Surveillance Inc. deployed a high-density LUMINYS infrastructure at Pantos Trucking's Tsawwassen logistics facility, delivering stable 4K video, long-distance PoE performance, and scalable system uptime across a demanding industrial environment.

The Challenge

Pantos Trucking needed comprehensive surveillance across a high-activity logistics facility with large indoor warehouse areas, outdoor yard operations, heavy vehicle movement, and critical cargo activity.

The site presented major infrastructure challenges: 45-foot mounting heights, cable runs approaching 900 feet, high camera density, and risk of signal degradation, voltage drop, and network congestion.

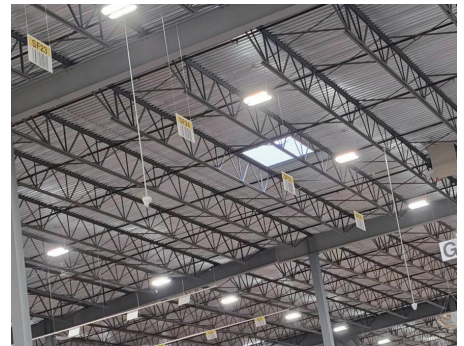
Standard PoE infrastructure could not support the required distance without adding cost and complexity through intermediate networking closets.

The Solution

Columbia Security deployed a LUMINYS intelligent infrastructure backbone built for distance, density, and reliability.

LumiPower long-distance PoE switches delivered stable power and data transmission across extended cable runs, while R68 Enterprise NVRs and aggregation switching provided the recording, storage, and bandwidth needed to support 110+ camera endpoints.

The result was a centralized, scalable architecture that simplified installation, reduced infrastructure complexity, and kept high-resolution video streams stable across the facility.



Project Overview Location

Tsawwassen, BC



Partner

Columbia Security Systems & Surveillance Inc.



Technologies Deployed

LumiPower | R68 Enterprise NVR
| 4K AI Cameras | LumiSearch |
Aggregation Switching

Validated Stability for a High-Density Logistics Environment



Impact Summary

The LUMINYS deployment eliminated concerns around voltage drop, signal degradation, and network congestion across the Tsawwassen facility.

Through onsite validation and incremental load testing, Columbia Security confirmed stable performance across tested scenarios, giving Pantos Trucking confidence that the system could support long-term security operations in a demanding logistics environment.

Key Outcomes

Long-Distance PoE Performance

LumiPower-enabled infrastructure supported 900-foot cable runs with stable power and data delivery.

Reliable Operational Uptime

Onsite testing validated stable performance under real-world industrial conditions.

High-Density 4K Video Backbone

R68 Enterprise NVRs and aggregation switching supported 110+ endpoints across warehouse and yard operations.

Scalable Security Foundation

The architecture gives Pantos Trucking room to expand camera coverage as facility needs grow.

Reduced Installation Complexity

The solution helped avoid costly intermediate network closets and supported centralized system management.

Technology Deployed



LumiPower Long-Distance PoE Switches

Designed to support extended power and data transmission across large industrial sites.



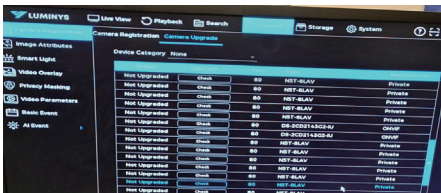
R68-64NA Enterprise NVR

Enterprise-grade recording backbone for high-density camera deployments, centralized management, and scalable storage.



4K AI Cameras

High-definition visibility for warehouse, yard, vehicle, and cargo monitoring.



Core-Aggregation Switching Architecture

High-bandwidth switching layer built to prevent congestion across large 4K video networks.



LumiSearch Analytics

Helps teams quickly search recorded footage and locate relevant people, vehicles, or events.



“After validating the system onsite, we saw consistent stability across all tested scenarios. The Luminys infrastructure delivered exactly what was needed - strong, reliable performance without complexity.”

- Columbia Security Systems & Surveillance Inc.